

# Time After Time

Cindy Lauper (1984)

A

♩ = 130

C(add9)



Lyin' in my bed I hear the clock tick and think of you  
Some times you pic - ture me I'm wal - king too far a - head  
Af - ter my pic - ture fades and dark - ness has turned to grey

C(add9)



Caught up in cir - cles con - fu - sion is no - thing new  
You're cal - lin' to me I can't hear what you - 've said  
wat - ching through win - dows you're won - de - ring if I'm o - kay

F G Em F F Em



flash back warm nights al - most left be - hind  
then you say go slow I fall be - hind  
se - crets sto - len from deep in - side

F G 1. Em F G7(sus4)(9) 2. Em F



suit - cases of me - mo - ries time af - ter un - winds if you're lost  
the se - cond - hand the drum be - ats out of time if you're lost

B



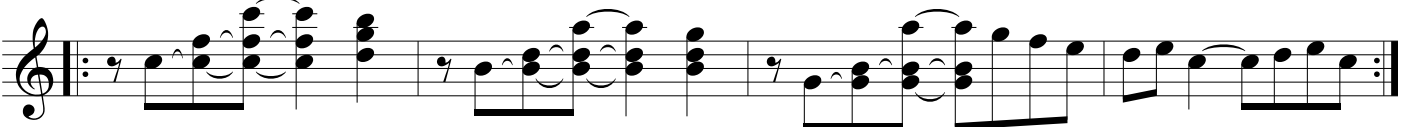
— you can look and you will find me time af - ter time if you fall  
— you can look and you will find me time af - ter time if you fall

G Am F G 1. C 2. C



— I will catch you I'll be wai - ting time af - ter time if you're lost  
— I will catch you I'll be wai - ting time af - ter time

C - Guit interlude



C - Sax

F G Em F

