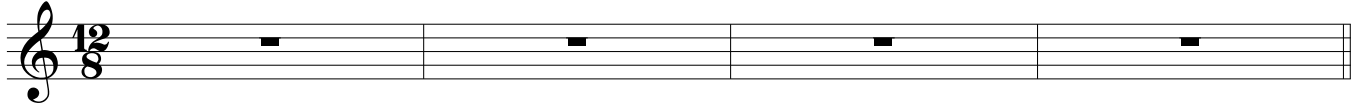


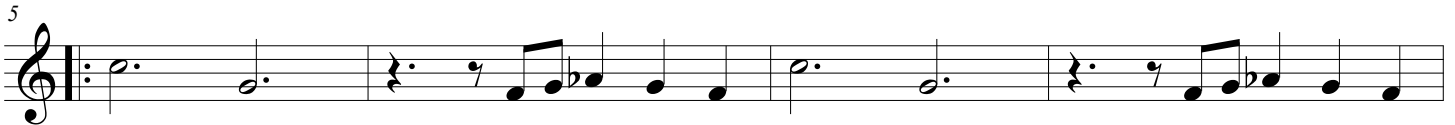
Sleepwalk

Larry Carlton (1981)

C Am7 Dm7(b5) Em7 Fm7 Bb7 Ebmaj7 Cm7 Fm Gm Abmaj7 Bb7(sus4)(9)



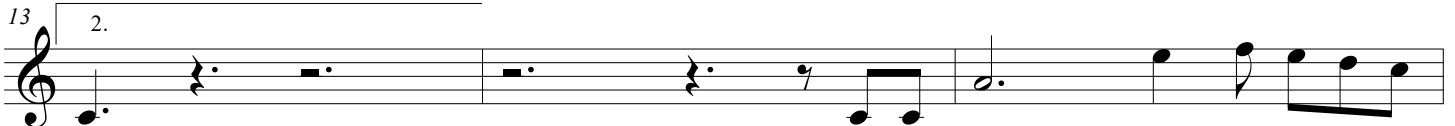
C Am7 Dm7(b5) G7(b9) C Am7 Dm7(b5) G7(b9)



C Am7 Dm7(b5) G7(b9) C Am7 Dm7(b5) G7(b9)



C Abmaj7 C C7 F



Fm C G7(sus4)(9) C C7



F Fm G7(sus4)(9) Ab7(sus4)(9) G7(b9)



C Am7 Dm7(b5) G7(b9) C Am7 Dm7(b5) G7(b9)



C Am7 Dm7(b5) G7(b9) C Am7 Dm7(b5) G7(b9)

